

Corsair Force Series 3 / Force GT Firmware Update Instructions

Here is the Force Series 3 and Force GT 1.3 firmware update. Please read the following before you attempt to update your firmware.

IMPORTANT NOTES BEFORE BEGINNING YOUR UPDATE

If you are stable and do not have issues, we suggest that you do not flash your firmware.

This update is intended to not be destructive. However, we strongly urge that you back up any important data before beginning this procedure.

This update has been validated for use with Windows 7. It has not been validated with Windows Vista and Windows XP however it may work with these OS's. Users are encouraged to update the drives with either Windows 7 when possible.

This update tool is intended to be run with the drive controller in AHCI mode. If your drive controller is not AHCI enabled and your update fails, you will need to change it to AHCI mode and also enable AHCI in your OS registry. Here is a guide for [ENABLING AHCI](#).

If you have issues updating using the Microsoft AHCI driver, you may need to update using the latest driver from your drive controller manufacturer.

Our latest testing shows that this update will not work using a Marvell controller.

If your update fails using the Marvell controller, you will need to update using the chipset based drive controller on your motherboard. This applies to SATA2 and SATA3 controllers.

DO NOT at any time power off your system during this procedure.

This may "brick" your drive. After your update if you still have issues, we strongly recommend the following steps:

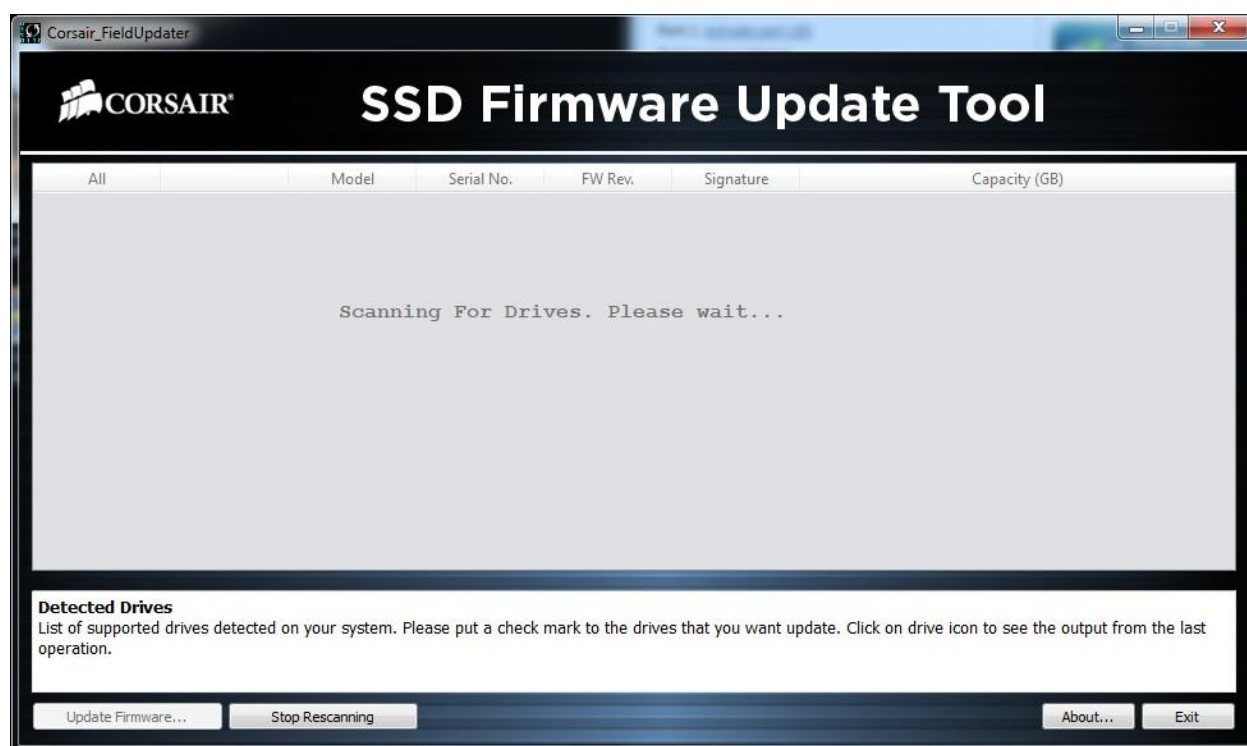
1. Complete clearing of the BIOS
2. Secure erase the SSD
3. A clean installation of the OS

UPDATE YOUR BIOS. As always for users with issues, we recommend that you update your motherboard/notebook to the most recent BIOS before attempting to flash your firmware. This may or may not resolve your issue but it is an excellent first step. Quite a few boards/notebooks have been given SSD specific updates over the past few months.

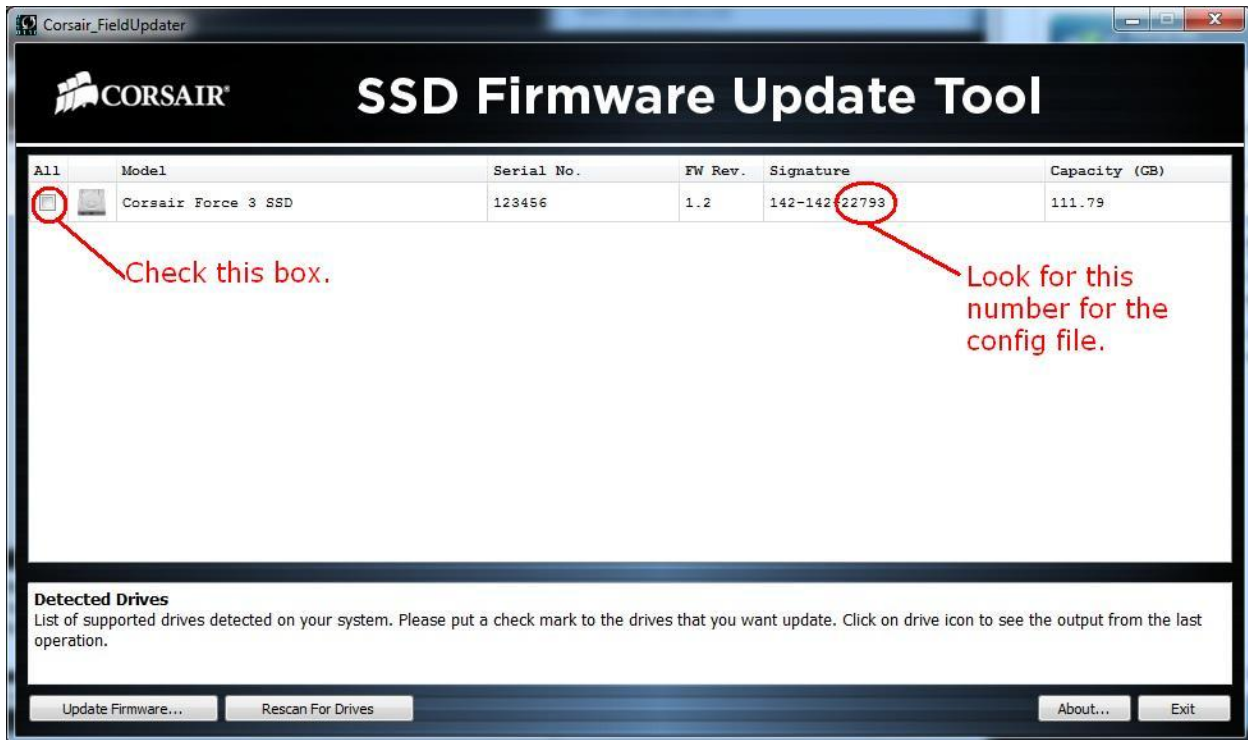
There is no change log available at this time.

Some systems are not capable of this update. Users that are unable to update on their machine are encouraged to find an alternative system for updating the drive. Users that cannot manually update are encouraged to file an RMA. Note that an RMA for update to firmware will result in complete erasure of the drive. [RMA LINK](#)

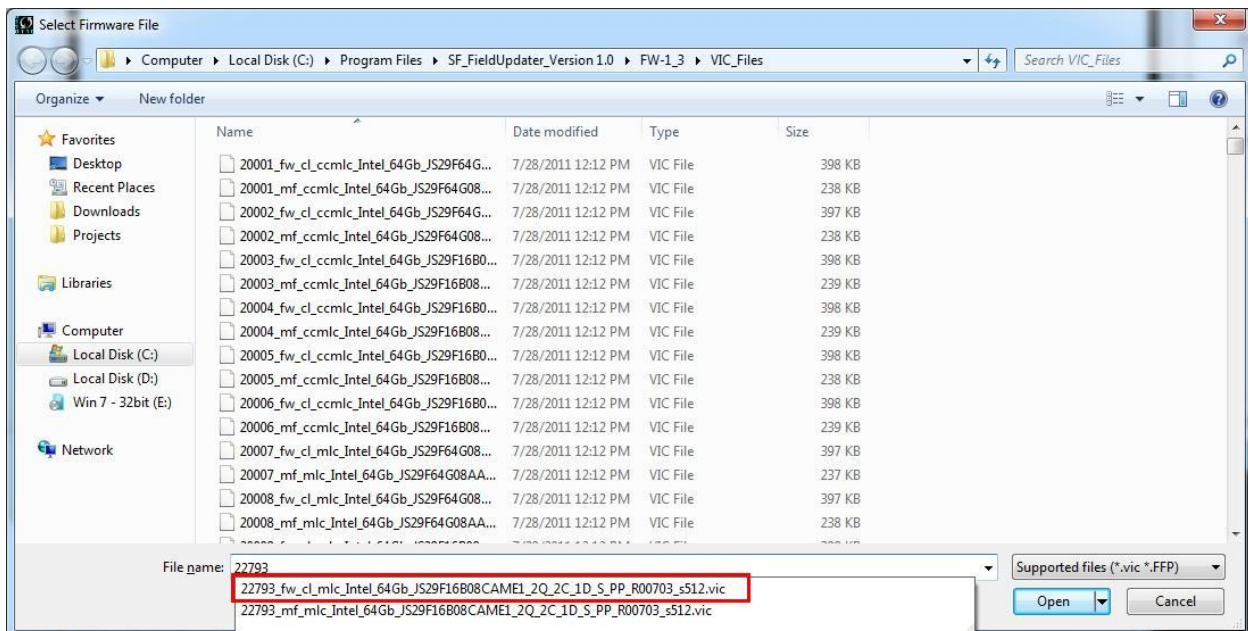
1. Right Click the program “Corsair_FieldUpdater.exe” and select Run as Administrator.



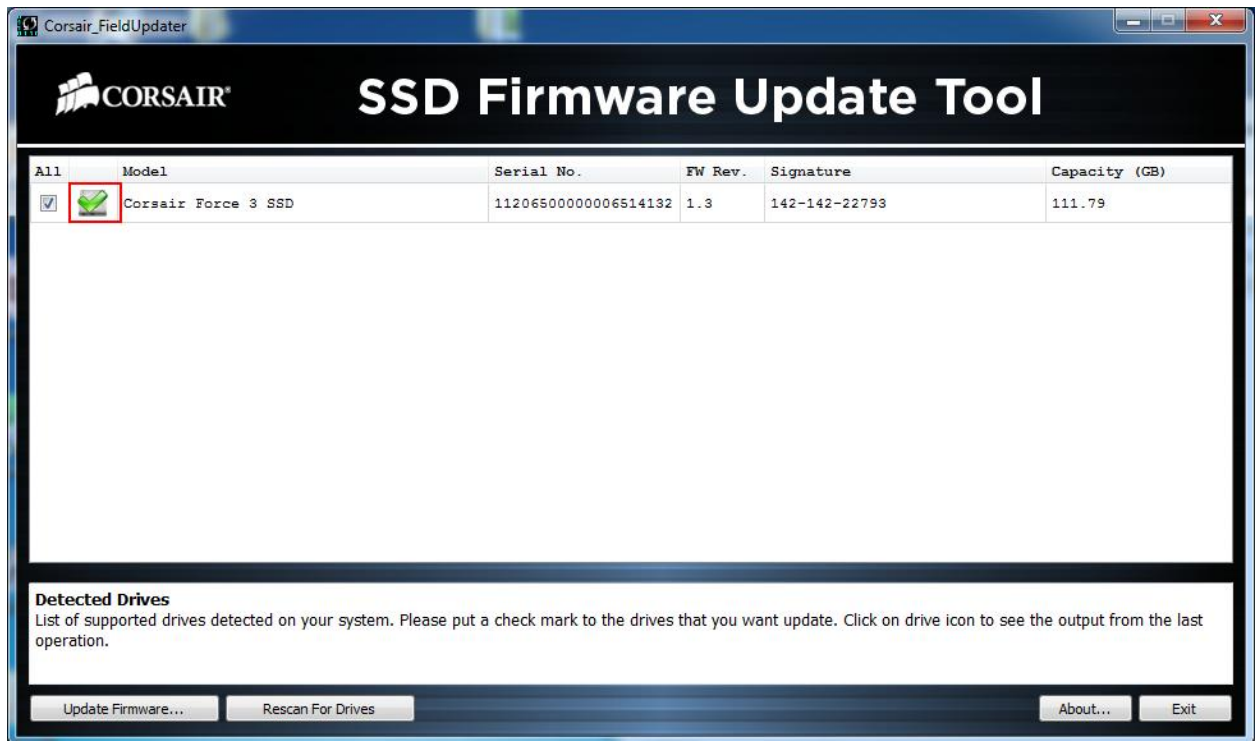
2. After “scanning for drives” is done, select the drive(s), if there is more than one drive to update the FW, by clicking the checkbox as shown below. The number for the selecting the correct config file listed under the column “Signature” as shown below.



1. Click the button "Update Firmware" and locate the config file matching with the same number, for example "22793_fw.....". This file is in the FW-1_3 folder.



2. Click open once correct file as been located. A warning window will pop up, click proceed. Once clicked it will start to update the drive. Do not disconnect or interrupt the drive until completely updated!
3. Once complete there should be a green checkmark indicating it has finished on the SSD Image, usually, it takes around 10 seconds.



4. Then, click "Rescan for Drives" button to confirm the FW update is done correctly. Under "FW Rev." the new version should update from 1.2 to 1.3 as seen below.

